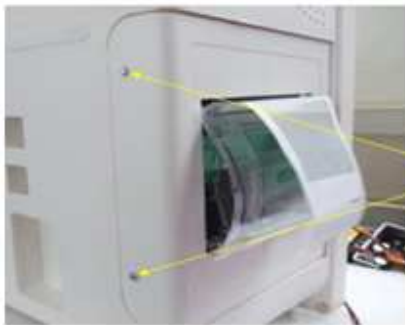


## Document A1: Assembly of Printer

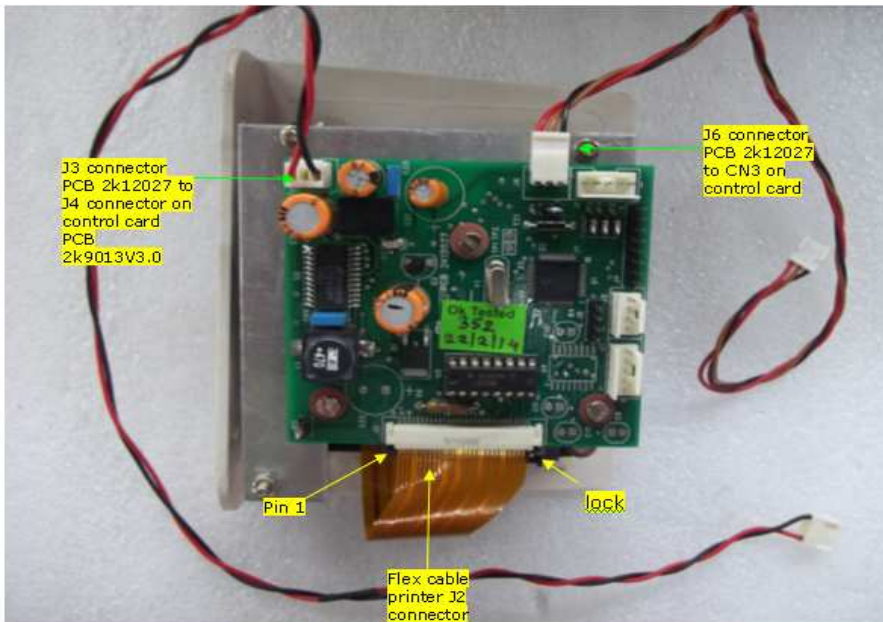
Follow the given steps to remove the Printer

1. Remove the screws from the side panel of the printer side



Screw M2\*9.5  
Self Tapping  
Screw

2. When removing the printer assembly, the connectors are connected to the PCB 9013. Remove those connectors and then remove the printer assembly.



3. To check if the flex cable is connected properly, open the lock by pulling it away from the PCB. Remove the flex cable and re-attach it and seal the lock by pushing it towards the PCB.
4. The flex cable is 29 pin and connector is 30 pin, so attach the flex cable very carefully starting from pin no 1.
5. Check the connectors and flex cable, place the printer on the side panel and screw it.



Direction to  
fit the printer  
assembly